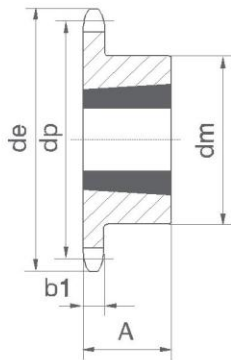
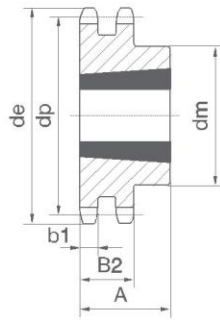


Taper Bore Sprockets

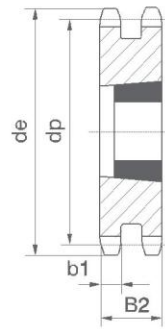
FOR ROLLER CHAINS DIN8187-ISO/R606



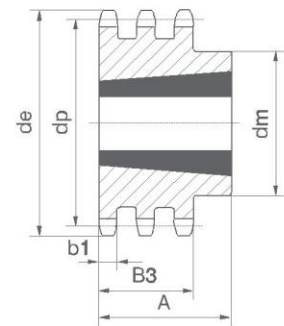
TYPE 1



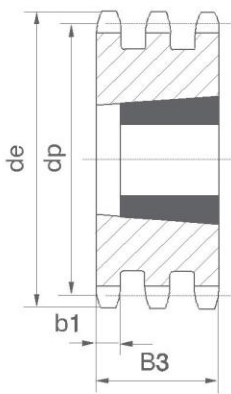
TYPE 2



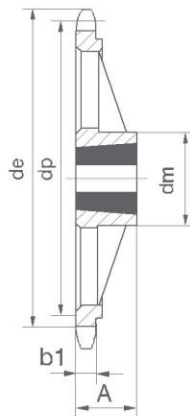
TYPE 3



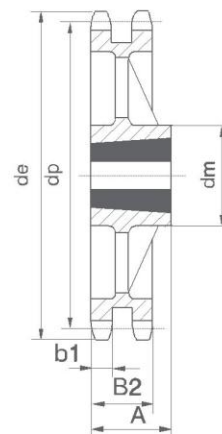
TYPE 4



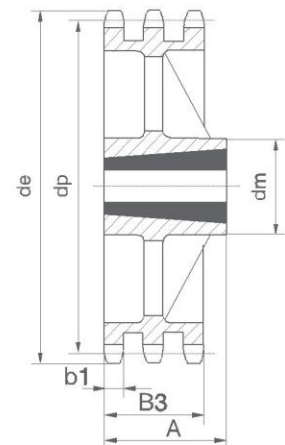
TYPE 5



TYPE 6



TYPE 7



TYPE 8

Taper Bore Sprockets

FOR ROLLER CHAINS DIN8187-ISO/R606

06B 3/8"x7/32"

Z	Simplex							Doublex				Triplex				SPROCKET		mm
	de	dp	dm	A	BUSH	TYPE	dm	A	BUSH	TYPE	dm	A	BUSH	TYPE				
17	55.5	51.83	45	22	1008	1	43	22	1008	2	—	25.6	1008	5	Tooth radius	r ₃	10	
18	58.6	54.85	45	22	1008	1	43	22	1008	2	—	25.6	1008	5	Radius width	C	1.0	
19	61.6	57.86	45	22	1008	1	46	22	1008	2	—	25.6	1008	5	Tooth width	B ₁	5.3	
20	64.6	60.89	46	22	1008	1	48	22	1008	2	—	25.6	1008	5	Tooth width	b ₁	5.2	
21	67.6	63.90	46	22	1008	1	49	22	1008	2	—	25.6	1008	5	Tooth width	B ₂	15.4	
															Tooth width	B ₃	25.6	
22	70.6	66.93	55	22	1108	1	52	22	1108	2	—	25.6	1210	5	CHAIN		mm	
23	73.7	69.95	63	25	1210	1	59	25	1210	2	—	25.6	1210	5	Pitch		9.525	
24	76.7	72.97	63	25	1210	1	61	25	1210	2	—	25.6	1210	5	Inner width		5.72	
25	79.7	75.99	63	25	1210	1	64	25	1210	2	—	25.6	1210	5	Roller diameter		6.35	
26	82.7	79.02	63	25	1210	1	65	25	1210	2	—	25.6	1210	5				
27	85.7	82.04	63	25	1210	1	70	25	1210	2	—	25.6	1210	5				
28	88.8	85.07	63	25	1210	1	70	25	1210	2	—	25.6	1210	5				
30	94.8	91.12	63	25	1210	1	75	25	1210	2	79	38	1615	4				
38	119.0	115.34	70	25	1210	1	80	25	1610	2	90	38	1615	4				
45	141.1	136.54	70	25	1210	1	80	25	1610	2								
57	177.5	172.91	83	25	1210	6	92	25	1610	7								
76	235.1	230.49	83	25	1210	6	92	25	1610	7								
95	292.7	288.08	83	25	1210	6	92	25	1610	7								
114	350.3	345.68	83	25	1210	6	95	38	1615	7								

08B 1/2"x5/16"

Z	Simplex							Doublex				Triplex				SPROCKET		mm
	de	dp	dm	A	BUSH	TYPE	dm	A	BUSH	TYPE	dm	A	BUSH	TYPE				
15	66.5	61.80	46	22	1008	1	46	22	1008	2	—	34.9	1008	5	Tooth radius	r ₃	13	
16	69.9	65.10	50	22	1108	1	50	22	1108	2	—	34.9	1210	5	Radius width	C	1.3	
17	74.5	69.11	60	25	1210	1	56	25	1210	2	—	34.9	1210	5	Sprocket tooth width	B ₁	7.2	
18	78.0	73.14	60	25	1210	1	60	25	1210	2	—	34.9	1210	5	Sprocket tooth width	b ₁	7	
19	82.5	77.15	63	25	1210	1	62	25	1210	2	62	38	1215	4	Sprocket tooth width	B ₂	21	
20	86.0	81.19	71	25	1610	1	66	25	1610	2	70	38	1615	4	Sprocket tooth width	B ₃	34.9	
21	90.6	85.21	71	25	1610	1	71	25	1610	2	70	38	1615	4				
22	94.1	89.24	71	25	1610	1	76	25	1610	2	70	38	1615	4				
23	98.7	93.26	76	25	1610	1	79	25	1610	2	70	38	1615	4				
24	102.1	97.29	76	25	1610	1	84	25	1610	2					CHAIN		mm	
25	106.7	101.32	76	25	1610	1	87	32	2012	2	—	34.9	2012	5	Pitch		12.7	
26	110.2	105.36	76	25	1610	1	87	32	2012	2	—	34.9	2012	5	Inner width		7.75	
27	114.8	109.40	76	25	1610	1	87	32	2012	2	—	34.9	2012	5	Roller -Ø		8.51	
28	118.3	113.42	90	32	2012	1	87	32	2012	2	—	34.9	2012	5				
30	126.9	121.49	90	32	2012	1	87	32	2012	2	—	34.9	2012	5				
38	159.2	153.79	90	32	2012	1	102	32	2012	2	—	34.9	2012	5				
45	188.6	182.07	102	32	2012	1	100	32	2012	7								
57	237.1	230.54	111	32	2012	6	111	32	2012	7								
76	313.9	307.33	111	32	2012	6	111	32	2012	7								
95	390.7	384.11	111	32	2012	6	111	32	2012	7								
114	467.4	460.90	120	45	2517	6	120	45	2517	7								

Taper Bore Sprockets

FOR ROLLER CHAINS DIN8187-ISO/R606

10B 5/8"x3/8"

Z			Simplex				Doublex				Triplex				SPROCKET		mm
	de	dp	dm	A	BUSH	TYPE	dm	A	BUSH	TYPE	dm	A	BUSH	TYPE	Tooth radius	r ₃	
13	73.2	66.32	47	22	1008	1									Radius width	C	1.6
14	78.2	71.34	52	22	1108	1								Tooth width	B ₁	9.1	
15	83.2	76.36	60	25	1210	1	—	25.5	1210	3	—	42.1	1215	5	Tooth width	b ₁	9.0
16	88.3	81.37	63	25	1210	1	—	25.5	1610	3	—	42.1	1215	5	Tooth width	B ₂	25.5
17	93.3	86.39	71	25	1610	1	—	25.5	1610	3	—	42.1	1215	5	Tooth width	B ₃	42.1
18	98.3	91.42	75	25	1610	1	—	25.5	1610	3	—	42.1	1615	5	CHAIN		mm
19	103.3	96.45	75	25	1610	1	—	25.5	1610	3	—	42.1	1615	5	Pitch		15.875
20	108.4	101.49	75	25	1610	1	—	25.5	1610	3	—	42.1	1615	5	Inner width		9.65
21	113.4	106.52	76	25	1610	1	—	25.5	1610	3	—	42.1	1615	5	Roller diameter		10.16
22	118.4	111.55	76	25	1610	1	—	25.5	1610	3	—	42.1	2012	5			
23	123.5	116.58	76	25	1610	1	—	25.5	1610	3	—	42.1	2012	5			
24	128.5	121.62	90	32	2012	1		90	32	2012	2						
25	133.6	126.66	90	32	2012	1		90	32	2012	2	105	45	2517	4		
26	138.6	131.70	90	32	2012	1		90	32	2012	2						
27	143.6	136.74	90	32	2012	1		90	32	2012	2	110	45	2517	4		
28	148.7	141.78	90	32	2012	1		90	32	2012	2						
30	158.8	151.87	90	32	2012	1		90	32	2012	2	120	45	2517	4		
38	199.1	192.24	102	32	2012	1		108	45	2517	2						
45	236.0	227.58	100	32	2012	6		120	45	2517	7						
57	296.6	288.18	111	32	2012	6											
76	392.5	384.16	111	32	2012	6											
95	488.5	480.14	120	45	2517	6											
114	584.5	576.13	120	45	2517	6											

12B 3/4"x7/16"

Z			Simplex				Doublex				Triplex				SPROCKET		mm	
	de	dp	dm	A	BUSH	TYPE	dm	A	BUSH	TYPE	dm	A	BUSH	TYPE	Tooth radius	r ₃		
13	87.8	79.59	63	25	1210	1									Radius width	C	2.0	
14	93.8	85.61	71	25	1610	1									Tooth width	B ₁	11.1	
15	99.8	91.63	71	25	1610	1		71	38	1615	2	—	49.8	1615	5	Tooth width	b ₁	10.8
16	105.8	97.65	75	25	1610	1		71	38	1615	2	—	49.8	1615	5	Tooth width	B ₂	30.3
17	111.9	103.67	76	25	1610	1		80	38	1615	2	—	49.8	1615	5	Tooth width	B ₃	49.8
18	117.9	109.71	90	32	2012	1		90	32	2012	2	—	49.8	2012	5	CHAIN		mm
19	123.9	115.75	90	32	2012	1		95	32	2012	2	—	49.8	2012	5	Pitch		19.05
20	130.0	121.78	90	32	2012	1		108	45	2517	2	—	49.8	2517	5	Inner width		11.68
21	136.0	127.82	102	45	2517	1		108	45	2517	2	—	49.8	2517	5	Roller diameter		12.07
22	142.0	133.86	108	45	2517	1		108	45	2517	2	—	49.8	2517	5			
23	148.1	139.90	108	45	2517	1		108	45	2517	2	—	49.8	2517	5			
24	154.1	145.94	108	45	2517	1		108	45	2517	2	—	49.8	2517	5			
25	160.2	152.00	108	45	2517	1		108	45	2517	2	—	49.8	2517	5			
26	166.2	158.04	108	45	2517	1		108	45	2517	2	—	49.8	2517	5			
27	172.3	164.09	108	45	2517	1		108	45	2517	2	140	51	3020	4			
28	178.3	170.13	108	45	2517	1		108	45	2517	2	—	49.8	2517	5			
30	190.4	182.25	108	45	2517	1		108	45	2517	2	140	51	3020	4			
38	238.9	230.69	108	45	2517	1		140	51	3020	2	140	51	3020	4			
45	283.2	273.10	120	45	2517	6		150	51	3020	7	—	49.8	2517	5			
57	355.9	345.81	124	45	2517	6		160	51	3020	7	—	49.8	2517	5			
76	471.1	460.99	124	45	2517	6		160	51	3020	7	160	51	3020	8			
95	586.2	576.17	124	45	2517	6		160	51	3020	7	160	76	3030	8			
114	701.4	691.36	124	64	2525	6		160	76	3030	7	160	76	3030	8			

Taper Bore Sprockets

FOR ROLLER CHAINS DIN8187-ISO/R606

16B 1"x17.02mm

Z	de	dp	Simplex				Doublex				Triplex				SPROCKET	mm		
			dm	A	BUSH	TYPE	dm	A	BUSH	TYPE	dm	A	BUSH	TYPE				
13	117.7	106.13	73	28	1615	1									Tooth radius	r ₃	26	
14	125.7	114.15	75	38	1615	1									Radius width	C	2.5	
15	133.7	122.17	76	38	1615	1									Tooth width	B ₁	16.2	
16	141.8	130.20	90	32	2012	1		47.7	2012	3					Tooth width	b ₁	15.8	
17	149.8	138.22	90	32	2012	1		47.7	2517	3					Tooth width	B ₂	47.7	
								47.7	2517	3		79.6	2517	5		Tooth width	B ₃	79.6
18	157.8	146.28	108	45	2517	1		47.7	2517	3								
19	165.9	154.33	108	45	2517	1		47.7	2517	3		79.6	3030	5	CHAIN		mm	
20	173.9	162.38	110	45	2517	1		47.7	2517	3					Pitch		25.4	
21	182.0	170.43	110	45	2517	1	140	51	3020	3		79.6	3030	5	Inner width		17.02	
22	190.1	178.48	110	45	2517	1	140	51	3020	2					Roller diameter		15.88	
23	198.1	186.53	110	45	2517	1	140	51	3020	2	159	89	3535	4				
24	206.2	194.59	110	45	2517	1	140	51	3020	2								
25	214.2	202.66	110	45	2517	1	140	51	3020	2	175	89	3535	4				
26	222.3	210.72	110	45	2517	1	140	51	3020	2								
27	230.4	218.79	110	45	2517	1	140	51	3020	2	175	89	3535	4				
28	238.4	226.85	110	45	2517	1	140	51	3020	2								
30	254.6	243.00	120	45	2517	1	140	76	3030	2	175	89	3535	4				
38	319.2	307.59	160	51	3020	6	160	76	3030	7	178	89	3535	8				
45	377.9	364.13	160	51	3020	6	160	76	3030	7	215	102	4040	8				
57	474.9	416.07	160	51	3020	6	175	89	3535	7	215	102	4040	8				
76	628.4	614.65	160	51	3020	6	178	89	3535	7	215	102	4040	8				
95	782.0	768.22	160	51	3020	6	215	102	4040	7	220	102	4040	8				
114	935.6	921.81	160	76	3030	6	220	102	4040	7	260	114	4545	8				

20B 1 1/4"x3/4"

Z	de	dp	Simplex				SPROCKET	mm	
			dm	A	BUSH	TYPE			
13	147.5	132.65	90	32	2012	1	Tooth radius	r ₃	33
15	167.7	152.72	110	45	2517	1	Radius width	C	3.5
17	187.7	172.78	110	45	2517	1	Tooth width	B ₁	18.5
19	207.8	192.91	110	45	2517	1	Tooth width	b ₁	18.2
21	228.0	213.04	120	45	2517	1	Tooth width	B ₂	54.6
							Tooth width	B ₃	91
23	248.2	233.17	120	45	2517	1			
25	268.4	253.33	120	45	2517	1	CHAIN		mm
27	288.5	273.48	150	51	3020	1	Pitch		31.75
30	318.7	303.75	160	51	3020	1	Inner width		19.56
38	399.4	384.49	160	51	3020	6	Roller diameter		19.05
45	471.1	455.17	160	51	3020	6			
57	592.3	576.36	160	51	3020	6			
76	784.3	768.32	160	51	3020	6			